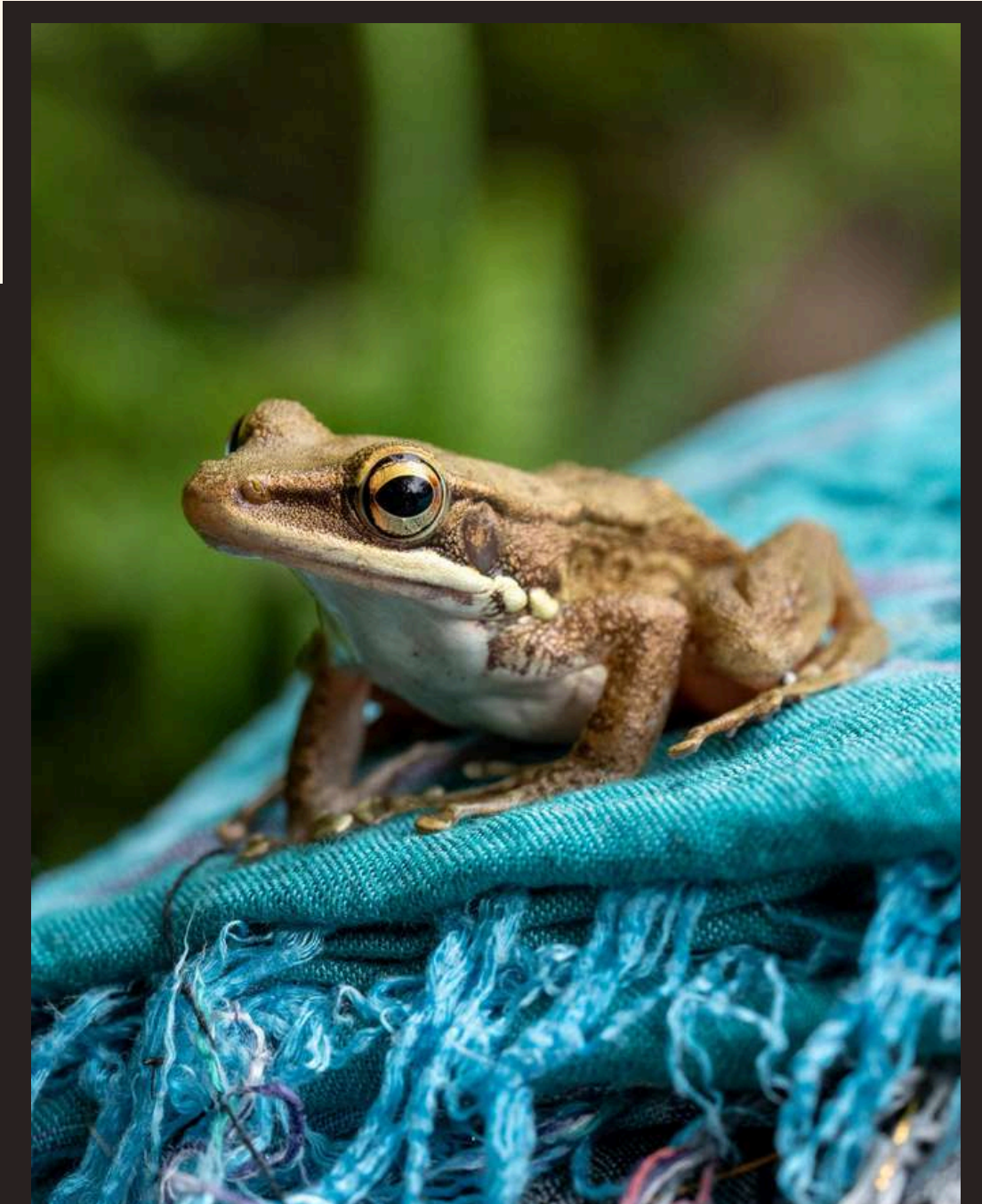


# Eco Principles

## 2024- 2025 POLICY

- Policies have been separated into four categories
- This booklet is intended to highlight our key policies which have developed through first hand experience while building our Eco Lodge



# INNOVATIVE, ADAPTIVE & RESPONSIVE

## 1. CHEMICAL FREE MANAGEMENT

All cleaning practices at the Lodge will be done with chemical free products or in exceptional circumstances, highly restrictive chemical use. The approach should always come from a place of minimising any foreign chemicals polluting our environment.



We will be creative and adaptive to find natural solutions with a smaller impact on health and the environment.

## 2. ENERGY USE WILL BE OPTIMISED AND MINIMISED

Energy use will be minimised in all possible ways. The sources of our power will be from on site green energy production where possible. We will continue to invest in further on site energy production when funds are available.

Guest comfort will be fostered in energy efficient ways and we will not compromise for an easy high energy solution.



# 3. WE WILL INNOVATE AND BE CREATIVE IN ALL ASPECTS OF DESIGN

We will take time to be innovative and to research the best practices in design to achieve low energy, low impact, low maintenance and desirable accommodation, landscapes and other facilities.



We will remember simplicity is best and the focus on appreciating nature, is at the heart of our design approach.



# 4. WE WILL ALWAYS BE OPEN SOURCE AND WILLING TO SHARE

We will always make our selves available and be helpful with any individual or business attempting to improve their sustainability practices or their social impact.



We will strive to be a positive and successful example of sustainable & regenerative business in Bali and Indonesia.

# ROBUST CIRCULATORY FLOW

## 1. WE WILL MINIMISE WASTE AND MAXIMISE RECYCLING AND COMPOSTING

All organic waste will be reused in compost or garden fertiliser. We will select products based on the sustainability of their packaging and limit our need for single use plastics while recycling wherever possible.



2. WE WILL  
STRIVE TO  
PRODUCE  
FRESH FOOD  
ON SITE

# 3. GREEN PRODUCTS PURCHASING

We will limit imported products and focus on local suppliers.  
Our menu will reflect local crops and traditions

**Eco Cleaning Products**  
We clean the lodge using natural, eco-friendly products from Bresih, ensuring safe and sustainable practices for our guests and the environment.  
**@bresihbali**

**Natural Soaps**  
Our guest room soaps come from Bali Asli, a local brand focused on natural, eco-friendly products, supporting our commitment to sustainability.  
Each soap is crafted to be gentle on your skin and free from harmful chemical.

**Organic Local Rice**  
Our organic rice is sourced from the Astungkara way cooperative who work with Balinese farmers to help them return to traditional and chemical free farming practices.  
**@astungkaraway\_farms**

**Recycled Bottles**  
We recycle our wine bottles with CGRecycle to create beautiful, hand-blown glassware. Each piece is crafted from 100% recycled materials, supporting sustainable practices and reducing waste.  
**@cgreecycle**  
By recycling our guests wine bottles, we are actively supporting eco-friendly initiatives and reducing waste on the island.

# 4. WATER SAVING MEASURES & MANAGEMENT

We will design for sustainable water use, and not use any equipment which uses excessive amounts of water. Where possible water will be recycled.



# 5. WASTE WATER RECYCLING GARDENS

We will implement waste water treatment systems for both grey and black water, which recycle nutrients back into plants and crops. Specifically designed gardens will capture nutrients from waste water without contaminating the ground water and environment.



# 6. UTILISE LOCAL AND NATURAL CONSTRUCTION MATERIALS

Wherever possible we will source building materials which are local, low carbon and chemical free. If choices are restricted the best option will be found based on minimal impact.



# HONOURING COMMUNITY & PLACE

## 1. WE WILL ACTIVELY DRIVE COMMUNITY PROJECTS OF ALL SCALES

By being engaged with members of the community and local leadership we will develop projects which are impactful and long lasting. We will also drive fundraising with the local business community.



## 2. WE WILL OPT FOR EMPLOYING MEMBERS OF OUR LOCAL COMMUNITIES



A crucial benefit of Eco businesses is the inclusion of members of our immediate community. We will offer training and build skills where necessary to fill more complex roles.

# 3. LOW IMPACT GUEST ACTIVITIES & GUEST EDUCATION

We will offer guest activities which do not have a negative impact on our environment, local culture or neighbouring businesses. These activities will engage a large cohort of the local community as workshop leaders, tour guides and massage therapists.

We will highlight our commitment to protect the biodiversity of our area, and suggests “how to be an eco guest” to support our sustainability measures. We will provide justification for Eco measures in place to assist guests on making more sustainable travel choices.



# 4. ECO FUND

We will have a dedicated fund for community and environmental projects. This will be funded by taking a set portion of each bill and setting it aside to make the next project possible.



# CONSERVATION & WILDLIFE

## 1. WE WILL ACTIVELY CREATE HABITAT AND FOOD SOURCES FOR NATIVE WILDLIFE



This will involve keeping a substantial portion of our land vegetated and only constructing on a maximum 10% of the land available. We will select for native and beneficial plant species to be planted and also maintain any riparian zones on our property.



## 2. ADVOCATING FOR NATIVE FLORA & FAUNA

We will be strong advocates for the protection of local biodiversity. This will include creating paid roles which employ members of the community to add value to conservation and the environment.

We will fight against poaching.



# 3. WILDLIFE REHABILITATION AND TREE PLANTINGS

We will provide support to wildlife rehabilitation in the area and facilitate the release of native animals where possible. We will advocate, support and drive for tree plantings which will expand the area of native vegetation cover.



# 4. NO RAINFOREST TIMBERS WILL BE USED

We will not support the unsustainable practice of harvesting rainforest timbers.



# 5. WE WILL PROVIDE SUPPORT TO ORGANISATIONS MAKING A DIFFERENCE

